

# **CEO Presentation to the CCRHB**

**October 21, 2022**

**James K. Gilman, MD  
NIH CC CEO**

# CC Staffing Updates

---

## Current Leadership Vacancies:

- **CC Chief Nurse Officer**
- **CC Chief Financial Officer**
- **CC Chief, Pharmacy Department**
- **CC Chief, Department of Transfusion Medicine**
- **CC Hospital Epidemiologist and Chief, CC Hospital Epidemiology Service**

## Staffing Priorities:

- **Return-to-Work (RTW) efforts continue as we attempt to define the Future of Work**

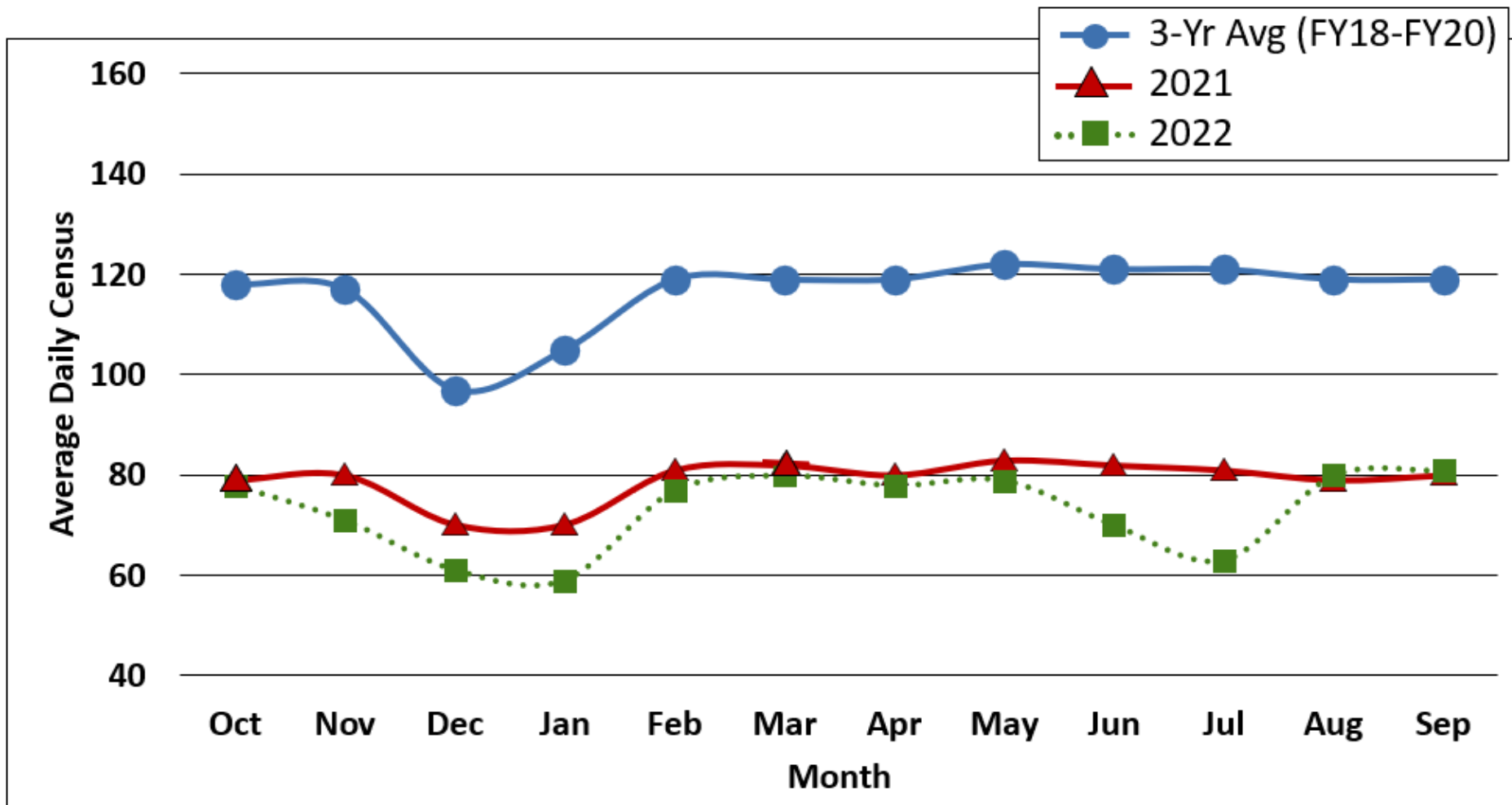
# Recent 2022 CC Honorees

---

- **2022 Clinical Recognition & CC Administrator of the Year Program** (*established 2018*):
  - 4 honorees will be announced at our next CC Town Hall on October 25<sup>th</sup>
    - 2 honorees in the Staff Clinician of the Year Category
    - 1 honoree in the Nurse Practitioner of the Year Category
    - 1 honoree in the Administrator of the Year Category
- **2022 NIH Director's Awards:**
  - Virtual Awards Ceremony will launch early November
  - 157 CC awardees, 4 individuals and 153 members of 16 groups
- **2022 CEO Awards:**
  - Virtual Awards Ceremony on December 16<sup>th</sup>
  - 134 nominations totaling 835 nominees being considered

# Average Daily Census

through September 30<sup>th</sup>, 2022



## ADC Stats

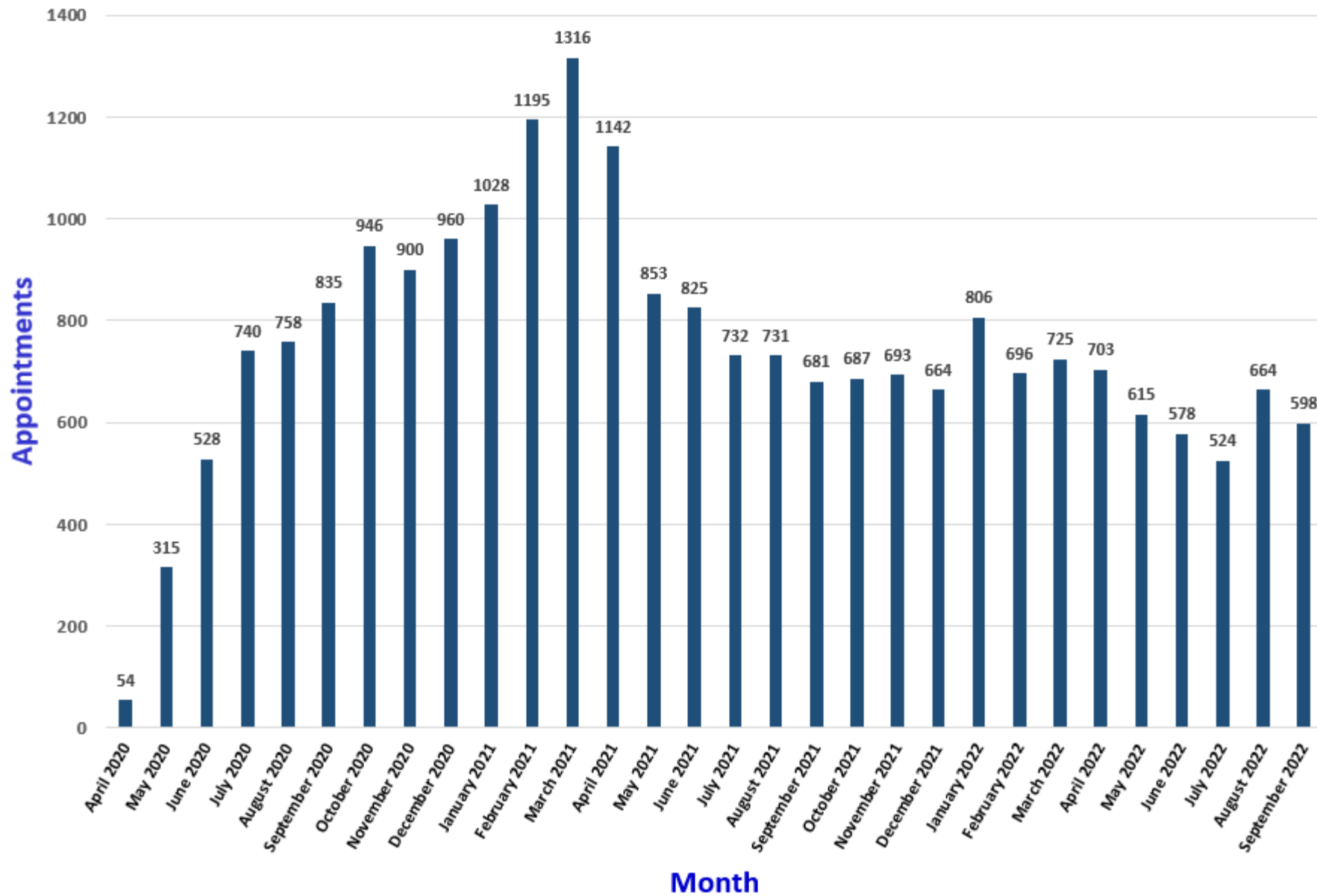
- 3-Year Average (FY 2018-2020) = 118.3
- Year End FY 2021: 79.4
- Year End 2022: 72.5

# Year-End FY22 Patient Activity

	EOY 2021	EOY 2022	% Change FY21-22
IP Admissions	2,990	2,908	-2.7%
ALOS	9.4	9.1	-3.3%
IP Days	28,967	26,448	-8.7%
Average Daily Census	79.4	72.5	-8.7%
OP Total Visits	68,566	74,871	9.2%
<i>OP Clinical Visits</i>	51,713	59,376	14.8%
<i>OP Day Hospital Visits</i>	16,853	15,495	-8.1%
New Patients	5,372	5,877	9.6%

# Telehealth Appointments by Month

## April 2020 - September 2022



Institute	Appointments
NCI	8,249
NIAID	2,374
NICHD	1,972
NIAAA	1,685
NHLBI	1,658
NIDDK	1,497
NIAMS	1,454
NIMH	1,328
NHGRI	796
CC	508
NINDS	425
NIDCR	333
NIHES	68
NCCIH	66
NEI	52
NINR	27
NIDCD	0
<b>Grand Total</b>	<b>22,492</b>

# Universal Masking is Still the Policy in Building 10

---

- **New guidance:** “CDC no longer recommends universal masking in healthcare settings” unless the facilities are in areas of high COVID-19 transmission
- **However:**
  - CC cares for many immunocompromised patients who are ubiquitously in CC common areas
  - Now at an ebb with COVID-19; but, if last 2 years are indication, can expect increases as the weather continues to change and more people spend more time indoors – the level of COVID-19 transmission is not fixed and may go back up.
- **Taking off masks this week** and then putting them back on next week or next month would be extremely difficult, demoralizing even.
- **Current season:** when other respiratory viruses come into play. We now have data that demonstrates the COVID-19 precautions have prevented the transmission of influenza and parainfluenza in the CC as well.
- **So, masks stay on for now.**

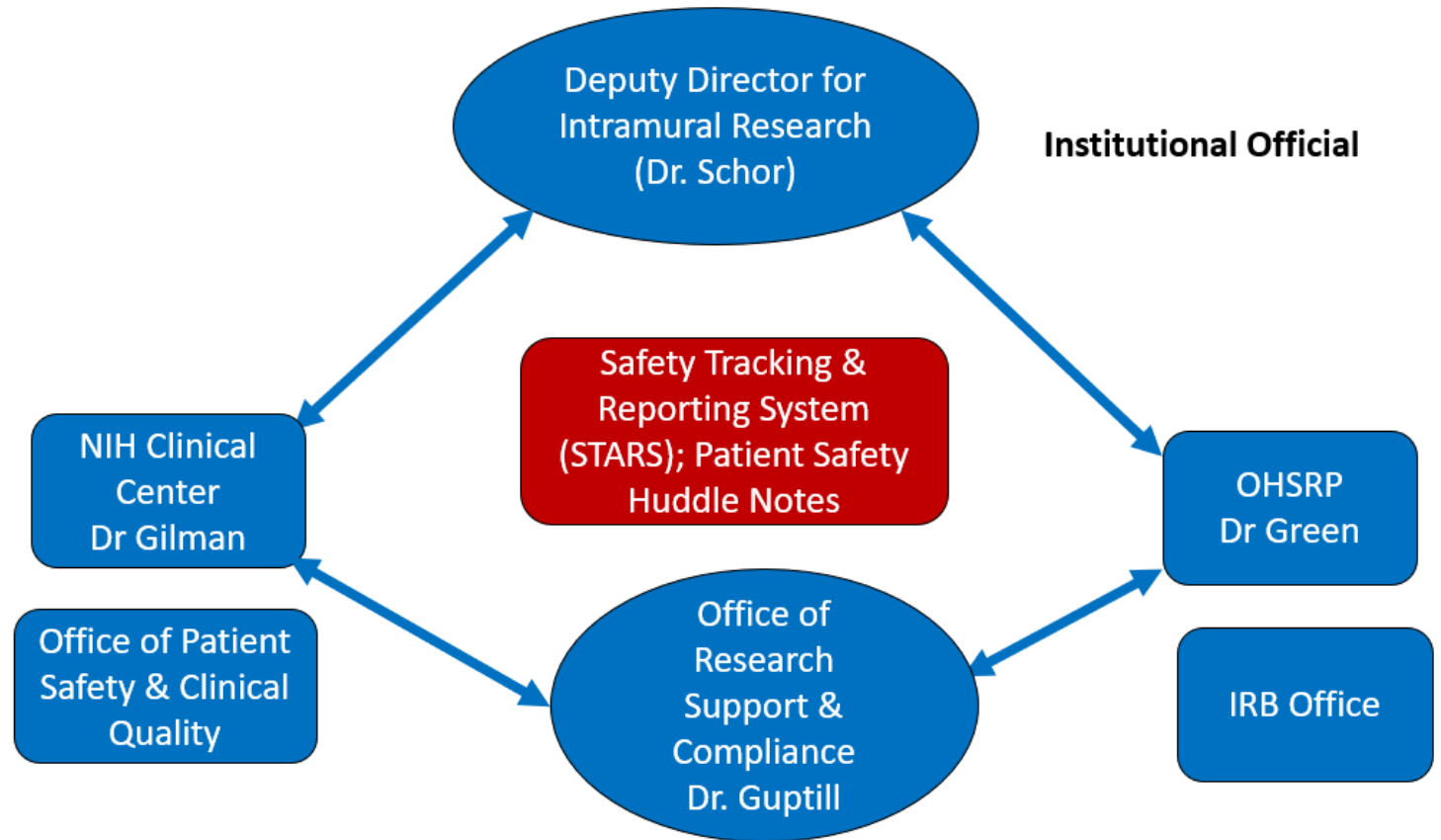
# Patient Safety in the Clinical Research Setting

CC Exec Leadership meets with ORSC every two weeks

DDIR meets with OHSRP, ORSC, and CC CEO two times per month

ORSC meets with OHSRP weekly

Monthly Sterile Products for Human Administration (ORSC,CC, DDIR)





# **Future of Work – Topic for Discussion**

- **Major topic of discussion at recent NIH Leadership Forum**
- **Every NIH Institute & Center is dealing with the issue to some extent**
- **For functions that are largely administrative in nature, how much on site presence is necessary?**
- **For functions that are largely administrative, how much on site presence is desirable?**

# Nature of Work Paradigm

- **Transactional**
- **Very noticeable if not completed**
- **Prominent in position description**
- **Measurable**
- **Required in appraisal**
- **Virtual tools developed to support**
- **Successful completion – efficiency**
- **Relational**
- **Often contributes to transactions**
- **Teamwork (collective effort)**
- **Casual, unplanned encounters at water cooler, coffee bar**
- **Difficult to measure**
- **Still learning how to do this work in the virtual environment**
- **Successful execution – great place to work**



*CLINICAL AND SAFETY PERFORMANCE METRICS*

Executive Dashboard

NIH Clinical Center

October 2022

**Reminder: Quarterly report provided to CCRHB members prior to every meeting:**

- **No longer a 'standing update' on CCRHB agenda**
- **Report posted on CC website for public viewing 7 days after each Board meeting**
- **Any questions/comments for Dr. Lang?**



**Twenty-second Meeting of the Clinical Center Research Hospital Board  
National Institutes of Health (NIH)**

**AGENDA**

Friday, October 21, 2022

---

**OPEN SESSION**

<b>9:00 AM</b>	<b>Welcome &amp; Board Chair's Overview</b> ➤ <b>Norvell V. Coots, MD</b> , <i>President and CEO, Holy Cross Health and NIH Clinical Center (CC) Research Hospital Board Chair</i>
<b>9:10 AM</b>	<b>NIH Director's Remarks</b> ➤ <b>Lawrence A. Tabak, DDS, PhD</b> , <i>Performing the Duties of the Director, NIH</i>
<b>9:30 AM</b>	<b>NIH CC CEO Update</b> ➤ <b>James K. Gilman, MD</b> , <i>Chief Executive Officer, NIH Clinical Center</i>
<b>10:00 AM</b>	<b>Clinical Research at the CC: Past &amp; Present</b> ➤ <b>John I. Gallin, MD</b> , <i>Chief Scientific Officer &amp; Scientific Director, NIH Clinical Center and NIH Associate Director for Clinical Research</i>
<b>10:40 AM</b>	<b>Impact of Research at the CC</b> ➤ <b>George M. Santangelo, PhD</b> , <i>Director, Office of Portfolio Analysis, NIH</i>
<b>11:20 AM</b>	<b>Discussion/Break</b>
<b>11:40 AM</b>	<b>Gene Therapy of Infants with GM1 Gangliosidosis</b> ➤ <b>Cynthia J. Tifft, MD, PhD</b> , <i>Deputy Clinical Director and Senior Clinician, Medical Genetics Branch, NHGRI</i> ➤ <b>Patricia M. Todd, DNP, RN, APRN, PCNS-BC, CPEN</b> , <i>Pediatric Clinical Nurse Specialist, Critical Care &amp; Sedation Services, CC Nursing Department, NIH</i>
<b>12:20 PM</b>	<b>More Research in Pediatric Patients in the Clinical Center</b> ➤ <b>James K. Gilman, MD</b> , <i>Chief Executive Officer, NIH Clinical Center</i>
<b>12:50 PM</b>	<b>Discussion</b>
<b>1:00 PM</b>	<b>Closing Remarks/Adjournment</b>