

CARD an NIA and NINDS Initiative



National Institutes of Health
Center for Alzheimer's and Related Dementias

structural opportunity

We have stable, generous resources

We have secure employment

Our review is not entirely prospective

There is the potential for us to define our own metrics of success

structural responsibility

Take on critical projects others can't easily address

Focus on complementing current research activities

Address critical resource and research gaps

Focus exclusively on research progress



mission

Initiate, Stimulate, Accelerate, & Support research in AD/ADRD,
leading to the development of improved treatments and cures

programmatic priorities

Projects that require a high tolerance for failure

Rapidly emerging opportunities; quick & nimble investigation

Projects that require long-term & stable commitment

Challenges centered on platform, infrastructure & capability building

Projects that require a high-level of collaboration and coordination

Projects that span disease and methodological boundaries



scientific themes



Molecular
Pathogenesis
Anchored in
Genetics



Disease
Subtyping,
Prediction of
Risk,
Progression



De-Risking of
AD/ADRD
Therapeutic
Approaches



Development
and Application
of Precision
Therapeutics

Diversifying the Research Endeavor

Democratization of Data

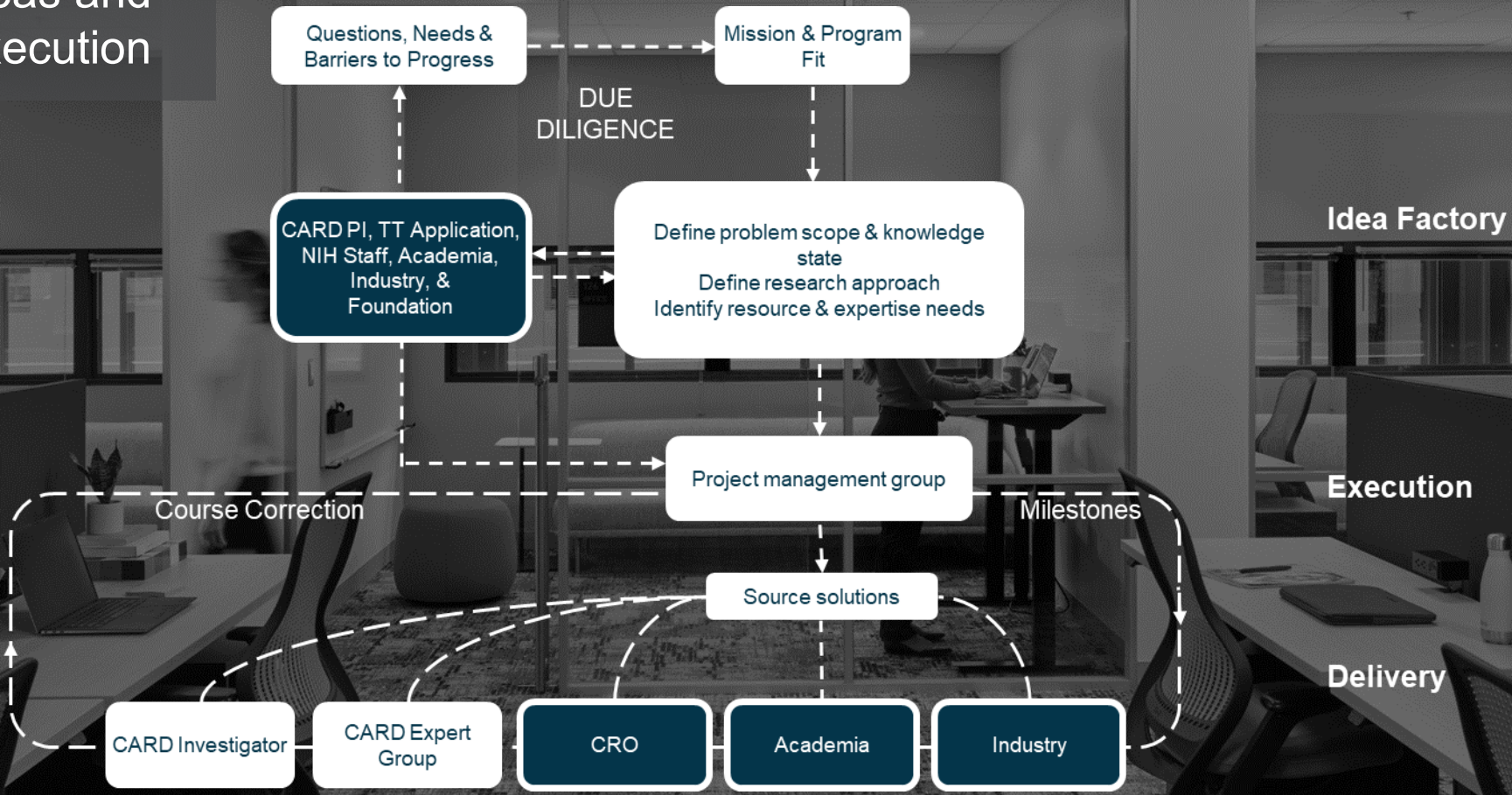
Collaboration and Cooperation

Transparency & Reproducibility

Foundational, Actionable Resource Production

organizational priorities

Ideas and Execution



CARD Challenge

Research Programs

Data and Resources

Job and Training Opportunities

News and Events

About

[Home](#) > [Research Programs](#) > [Propose a CARD Research Challenge](#)

Share This Page:   

Research Programs

All Research Programs

iPSC Neurodegenerative Disease Initiative

Long-read Sequencing

AutoTAC (Tau Protein Aggregates)

Brain Atlas

TDP-43

Propose a CARD Research Challenge

Propose a CARD Research Challenge

The AD/ADRD research field is a thriving and productive one. CARD aims to complement this work and fill critical gaps and needs in the research pipeline with an emphasis on projects that are not easily supported by traditional extramural funding mechanisms. Formed as part of NIH's Intramural Research Program (IRP), CARD is committed to working closely with NIH staff to develop critical programs of research and infrastructure development in the AD/ADRD space.



CARD Facility (1)



National Institutes of Health
Center for Alzheimer's and Related Dementias

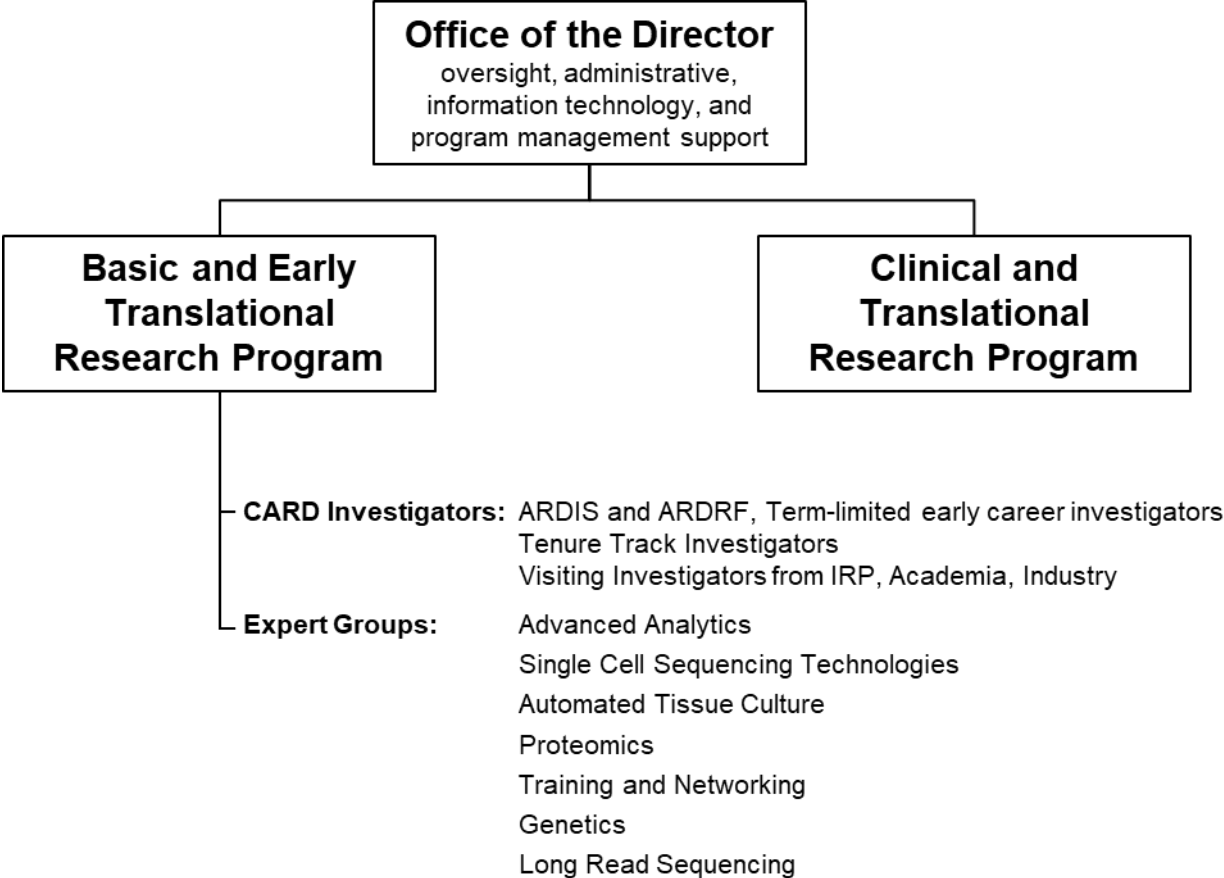
CARD Facility (2)



CARD Facility (3)
CARD Facility (3)



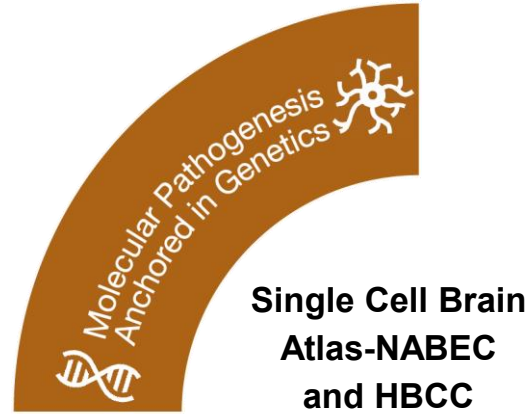
Organizational Structure



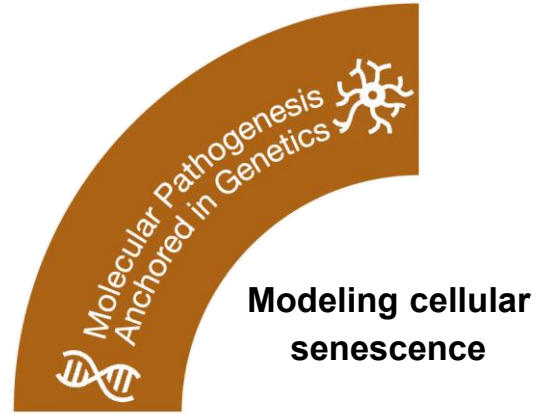
CARD Scientific Priorities



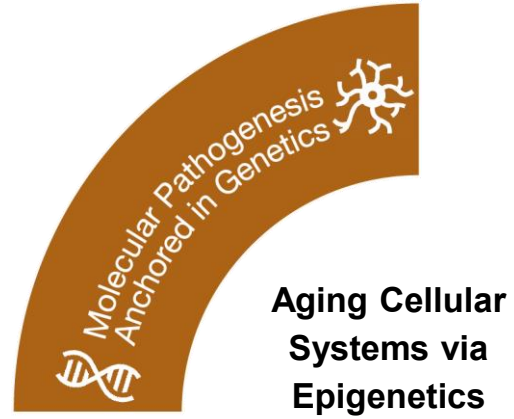
CARD Project Example 1



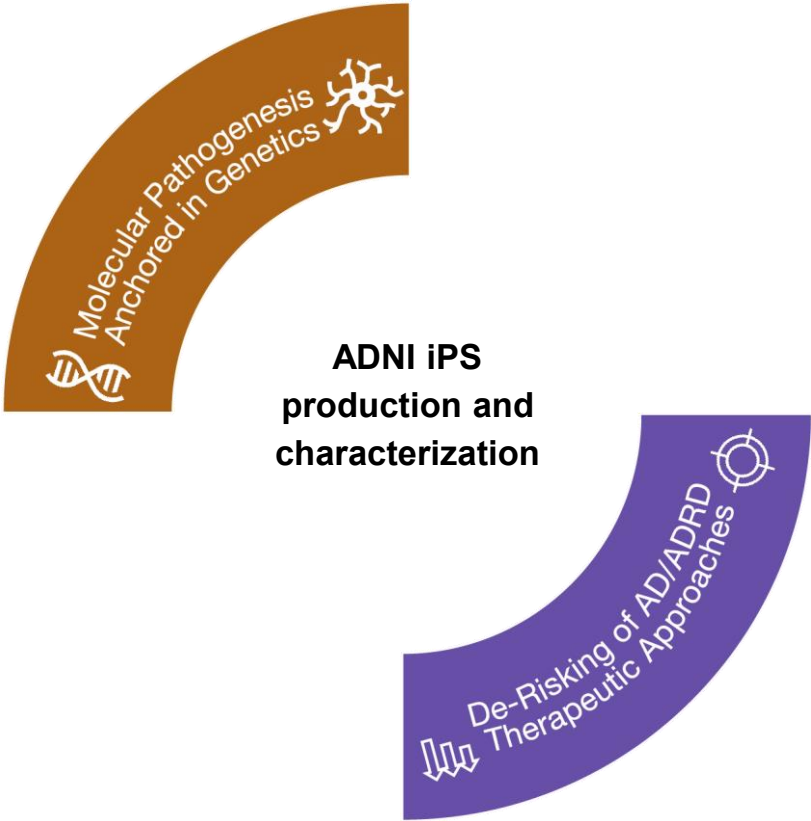
CARD Project Example 2



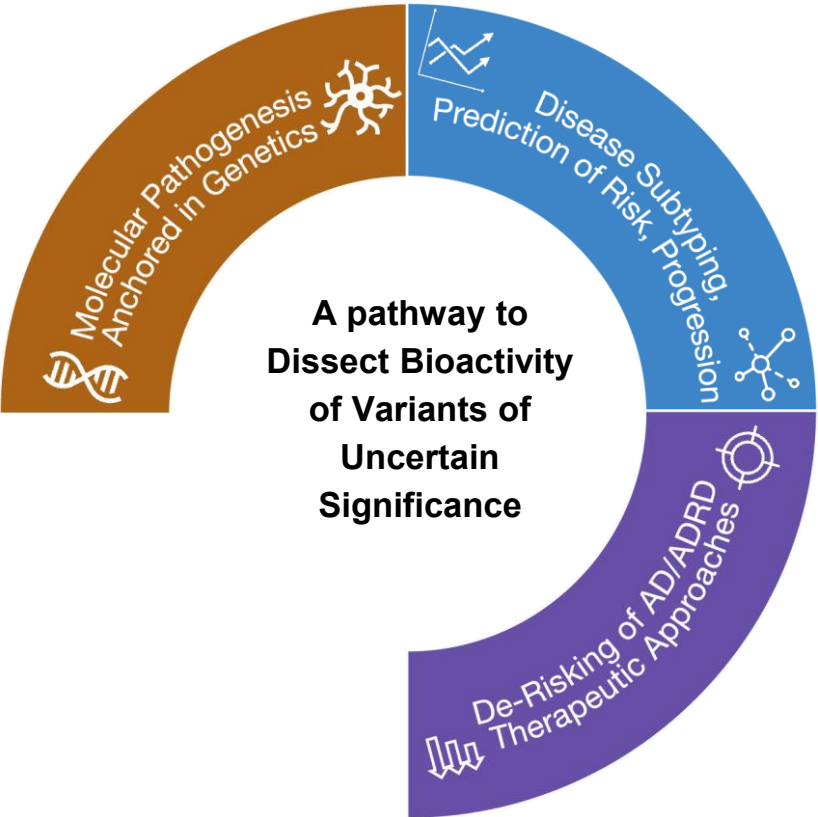
CARD Project Example 3



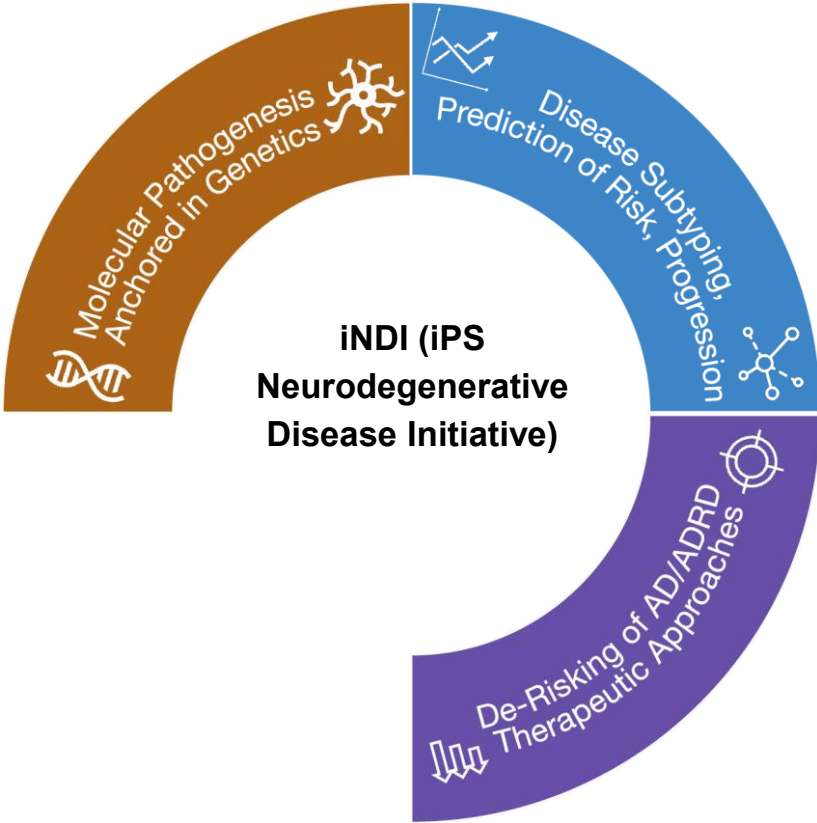
CARD Project Example 4



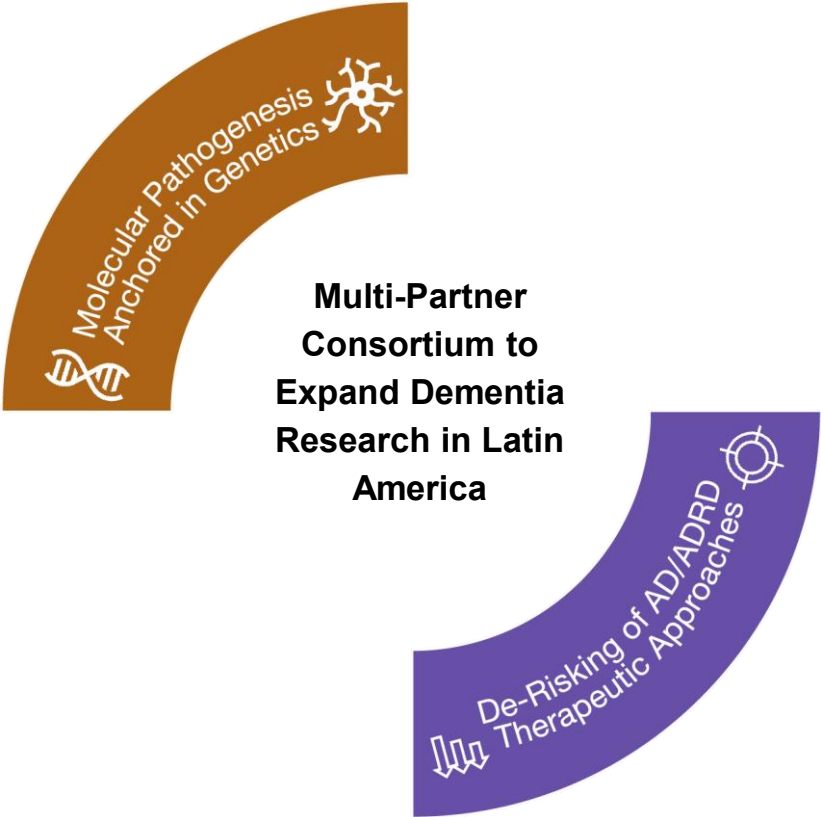
CARD Project Example 5



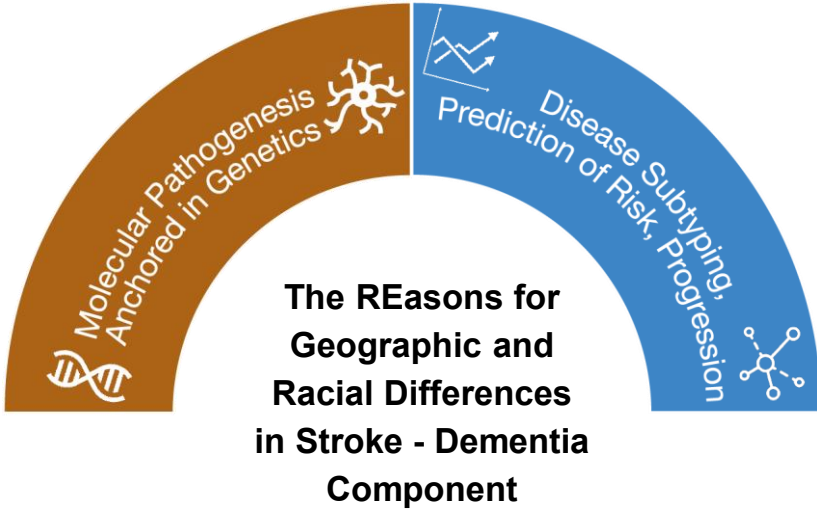
CARD Project Example 6



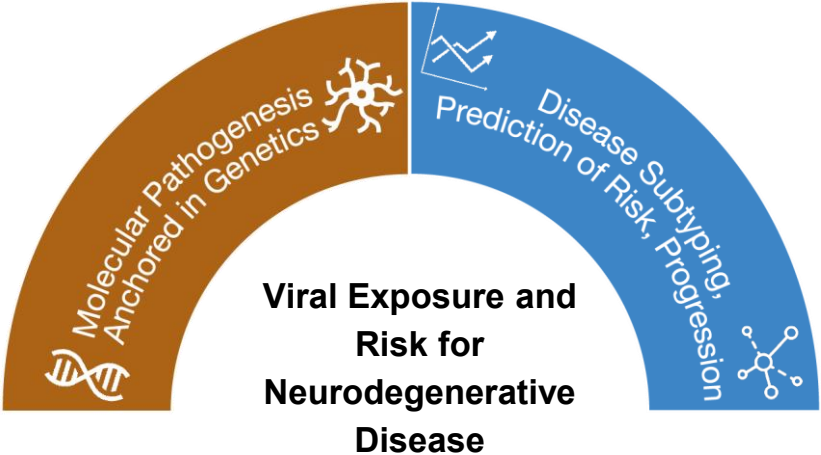
CARD Project Example 7



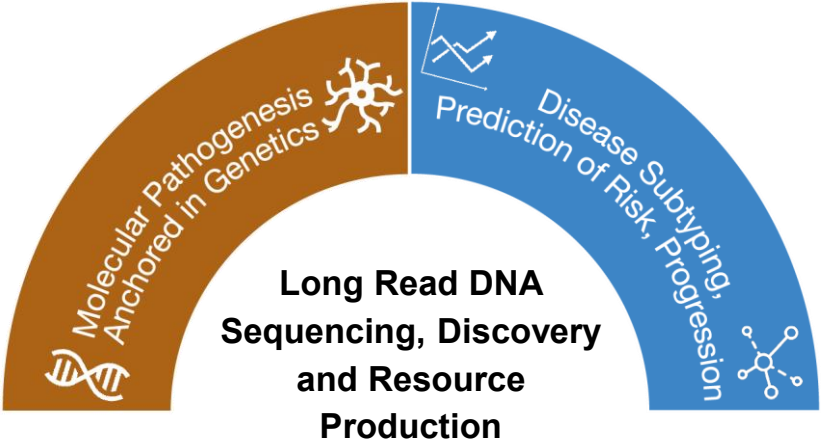
CARD Project Example 8



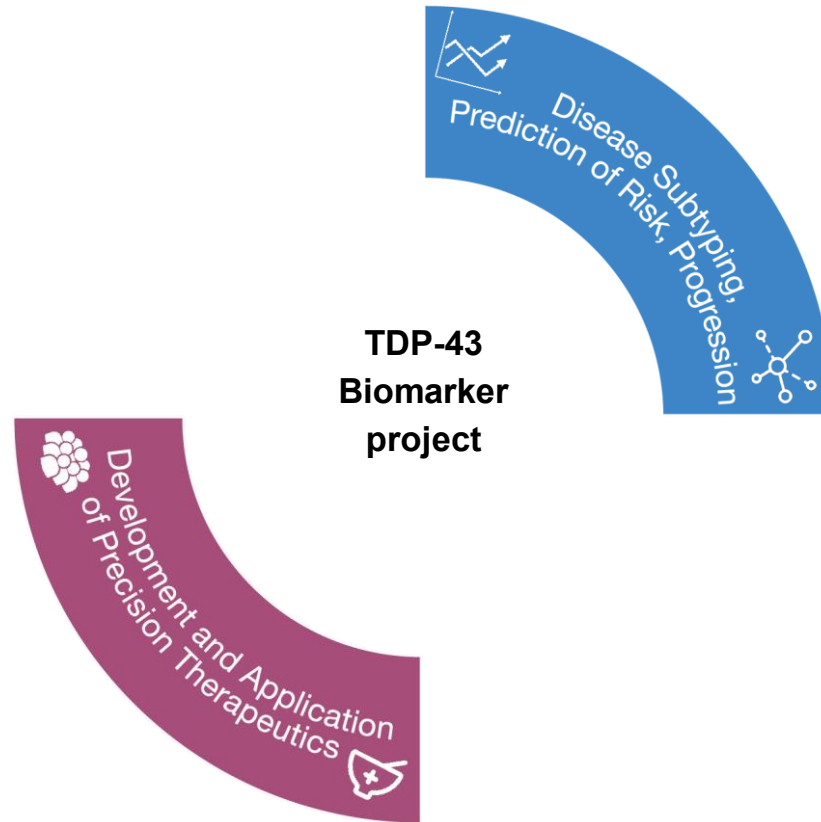
CARD Project Example 9



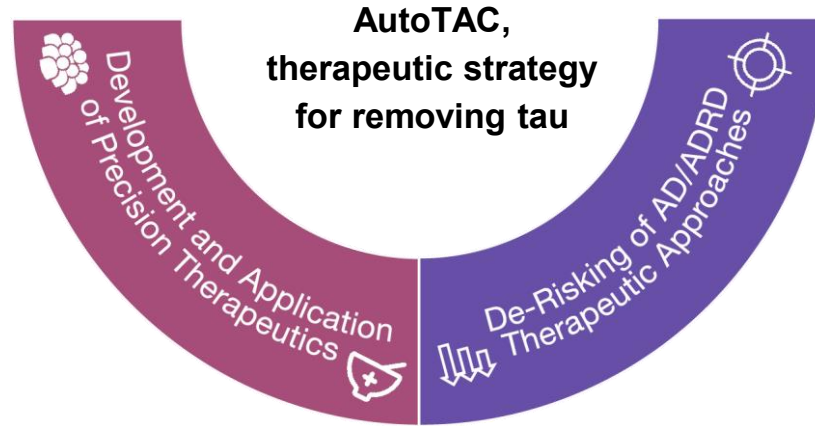
CARD Project Example 10



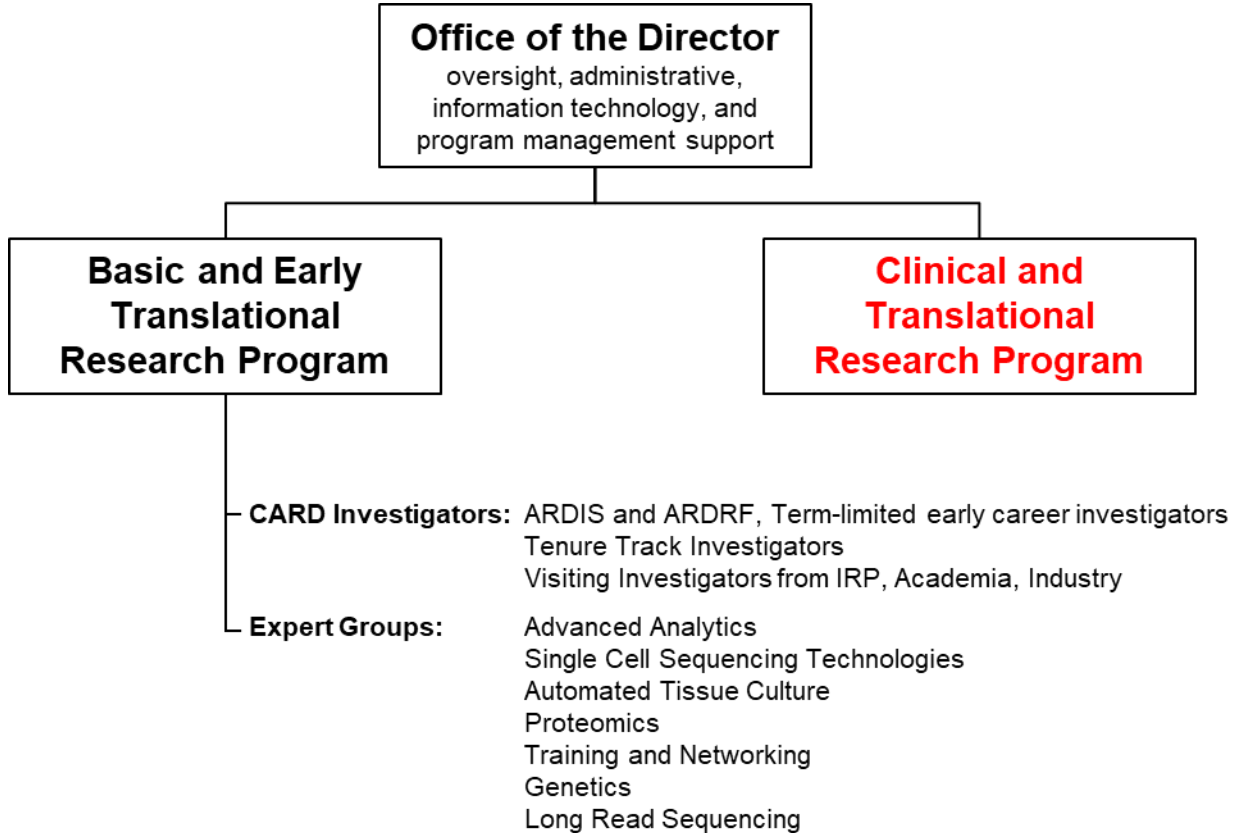
CARD Project Example 11



CARD Project Example 12



Organizational Structure



CARD Clinical Translational Research Program

Right Patient
Right Therapeutic
Right Time



CARD Precision Therapeutics

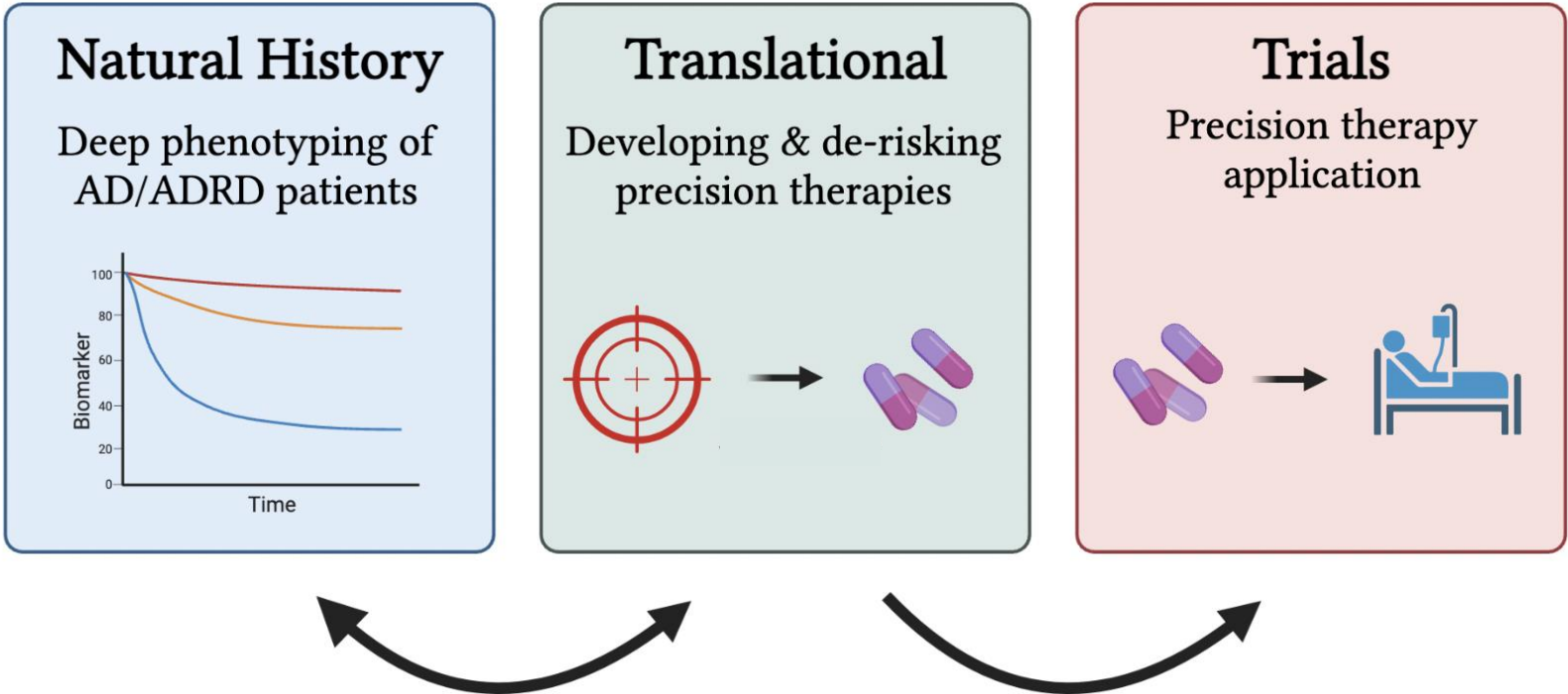
High-confidence precision therapeutic targets exist
Genomic therapies (ASOs, CRISPR) are effective
Regulatory pathways are becoming clearer for ASOs
Above features enable rapid target->trial pathway

IRP advantages

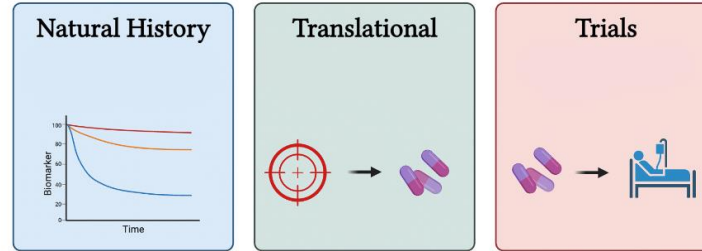
Existing clinic/hospital infrastructure
Experience in genomic medicine
Funding available at front end – speed + equity
Link to existing CARD projects and infrastructure



CARD Precision Therapeutics Clinical Program



CARD Precision Therapeutics Clinical Program Components: Natural History



Natural History

Deep phenotyping of AD/ADRD patients

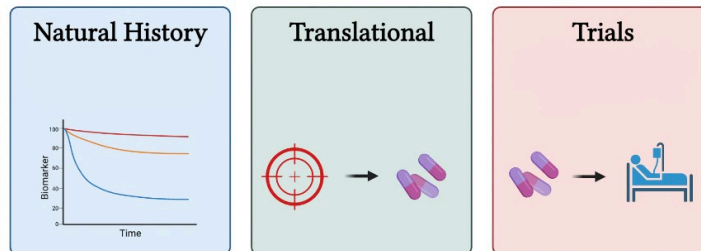
Patients

- New and longitudinal
- Complex and Monogenic
- Leveraging existing efforts

Characterization

- History and Physical
- Neuropsych.
- Imaging
- Biospecimens
- Genetic
- Digital

CARD Precision Therapeutics Clinical Program Components: Translational



Translational

Developing & de-risking precision therapeutics

Target Causality

- Scalable pooled editing and phenotyping in cells

Target Engagement

- Reversal of cellular phenotypes

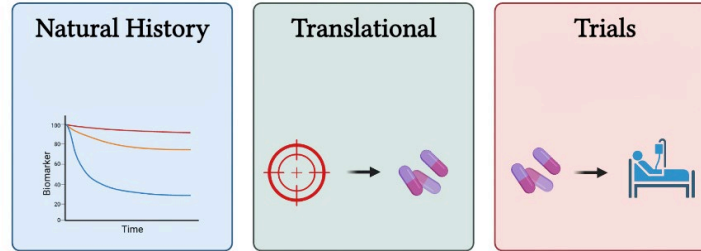
De-risking Therapies

- Xenotransplantation
- Toxicology

Biomarkers

- Mass. spec, somalogic, o-link
- Identify molecular subpopulations of sporadic AD

CARD Precision Therapeutics Clinical Program Components: Trials



Trials

Precision therapy application

ASOs

- Patient recruitment: Regional, national and International
- Initially target well-defined genes/mechanisms (GRN, APOE)
- Broaden to sporadic AD patients sub-grouped based on molecular biomarkers /genetics

CRISPR/prime

- C9ORF72, APOE

Novel small molecules

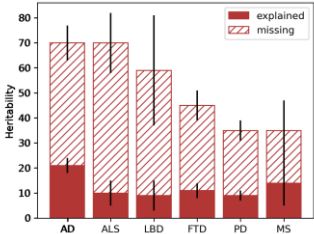
- e.g. TDP-43 de-aggregases

CARD Clinical Translation – Challenge Projects

C9 CRISPR therapy



VUS pathogenicity



Wearables/digital health



Synergy with existing efforts in CARD/IRP

- Genetics/Genomics
- iPSCs (iNDI)
- Functional Genomics (iNDI)
- Biomarker Development
- Data Science
- Gene Therapy/ASO Investment
- Culture of Rigor, Transparency, Collaboration

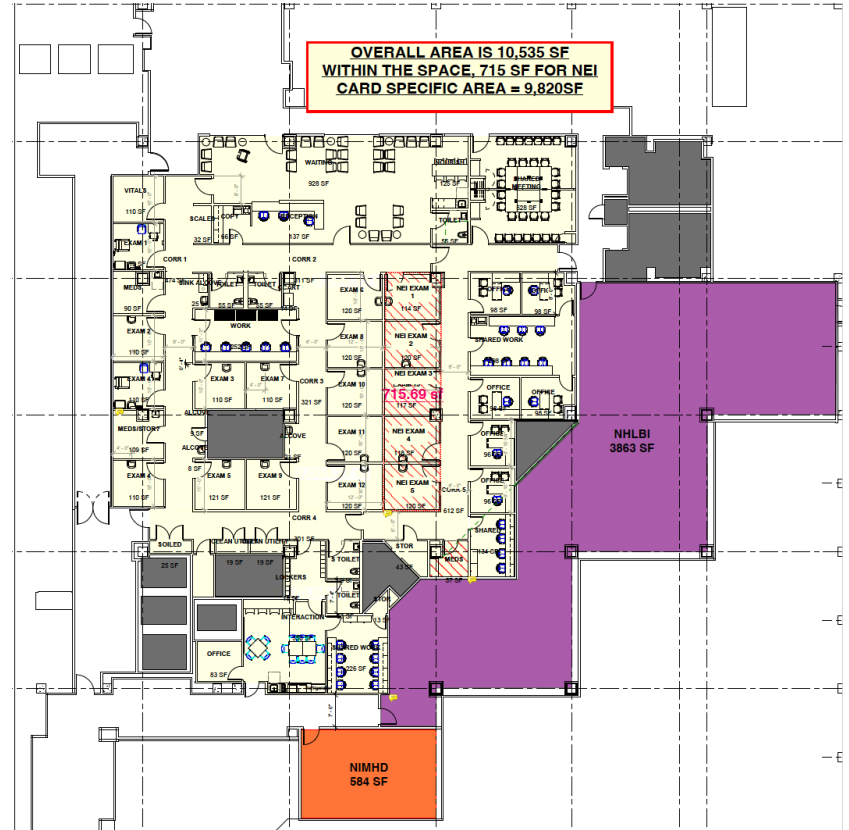
Goal: Become destination medical center for precision trials in AD/ADRDs



Identifying Space

Approximately 8,500sf of contiguous space for an outpatient clinic, for eg with

- Examination rooms
- Rooms for neuropsychological evaluations
- Nursing intake room (monitoring vital signs etc.)
- LP and small procedure room
- Conference rooms for discussion with families and case conferences
- Offices for clinical staff
- Patient waiting area



Identifying a Leader

Over the next period, recruitment efforts will begin to identify a Director for the Clinical Translation Program at CARD

- ✓ An individual with a track record in the AD/ADRD space
- ✓ Someone who recognizes the potential of the IRP and the opportunity to work in lock step with the basic and early translational program of CARD
- ✓ A clinician-researcher with a clear vision and the skill necessary to implement this vision